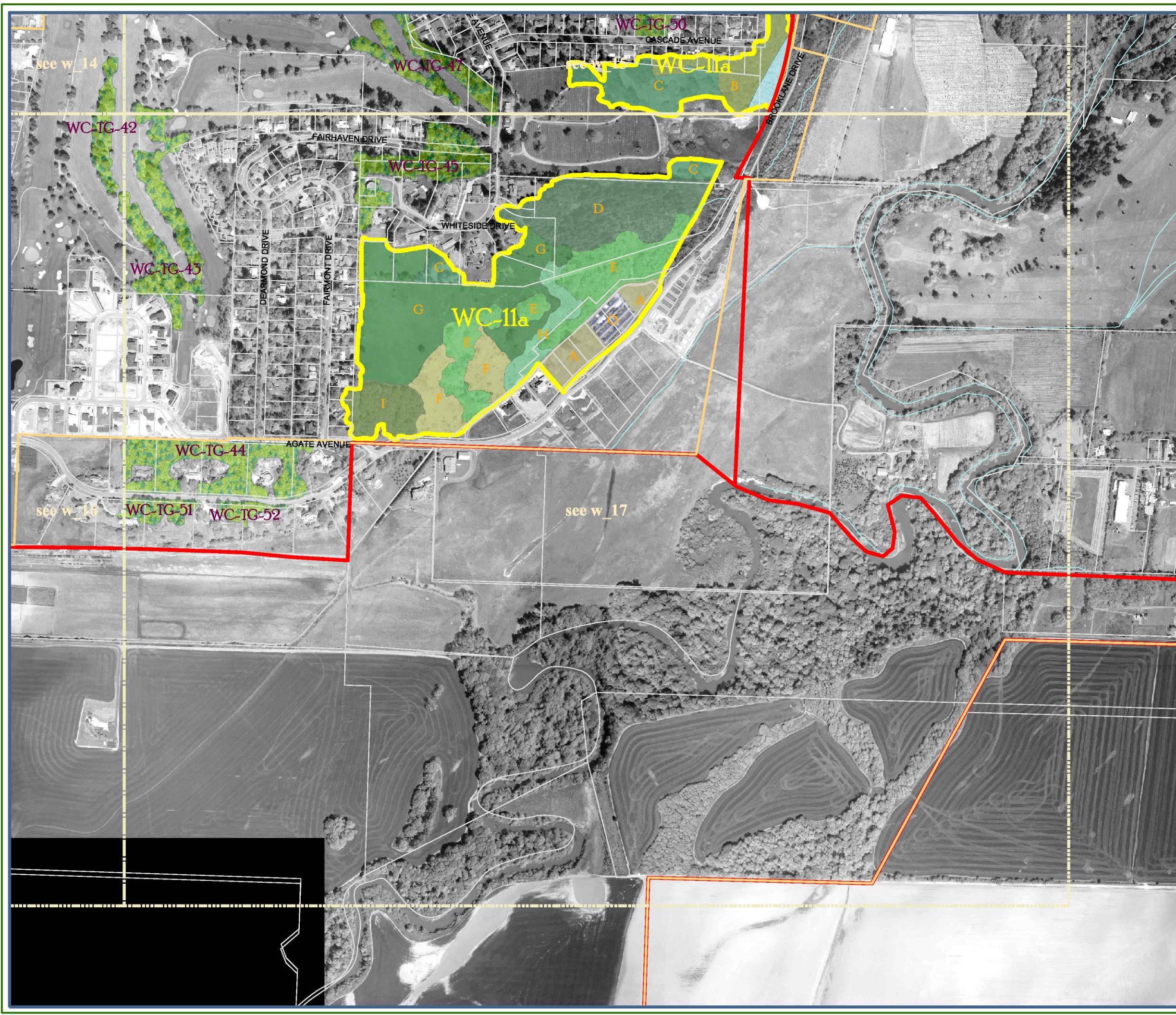


Corvallis Natural Features Inventory

WHA, Vegetation Sub-polygons and Tree Groves

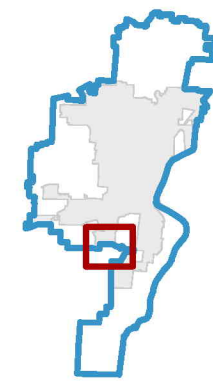
map sheet w_17



Legend

- Wildlife habitat boundaries
- Vegetation sub-polygons**
- A
- B
- C
- D
- E
- F
- G
- H
- I
- J
- K
- L
- M
- N
- O
- P
- Q
- R
- S
- O
- Riparian assessment area
- Isolated tree groves
- Streams
- Subarea/UGB Boundary
- City Limits
- Parcel boundaries

WHA site number referenced in yellow.
 Vegetation sub-polygons referenced in orange. To determine vegetation sub-polygons, first find the associated WHA data sheet and match their appropriate sub-polygon letter. The capital letter "O" represents developed areas inside WHA's (not part of WHA). Tree Grove site numbers are referenced in maroon.



Map scale: 1 inch = 600 feet
 Projection: State Plane Oregon Zone North, FIPS zone 3601, North American Datum 1983

Sources:
 Field inventory conducted by Salix Associates.
 All base data provided by the City of Corvallis.
 Data compilation and map production by Ecotrust, 2002.